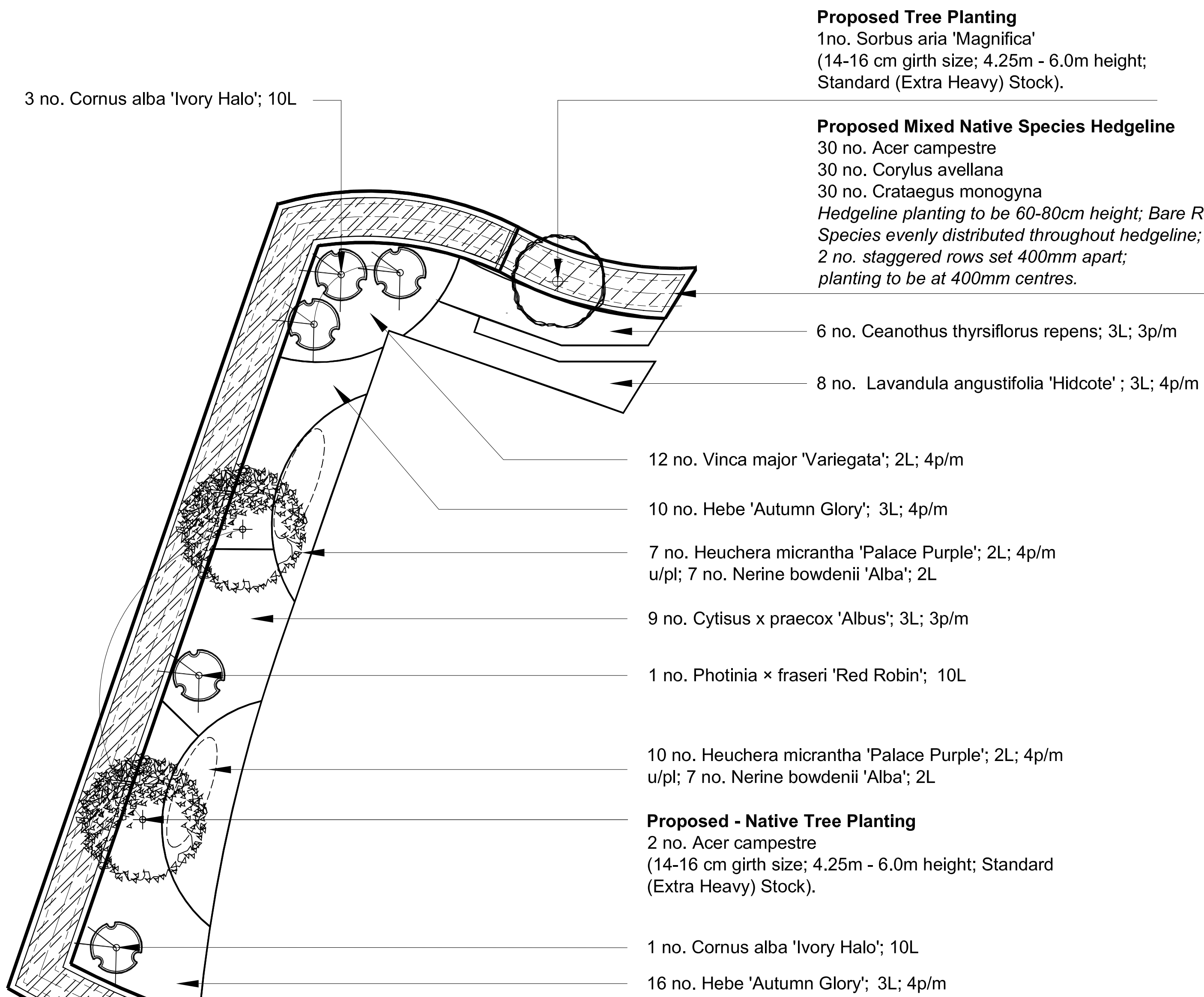
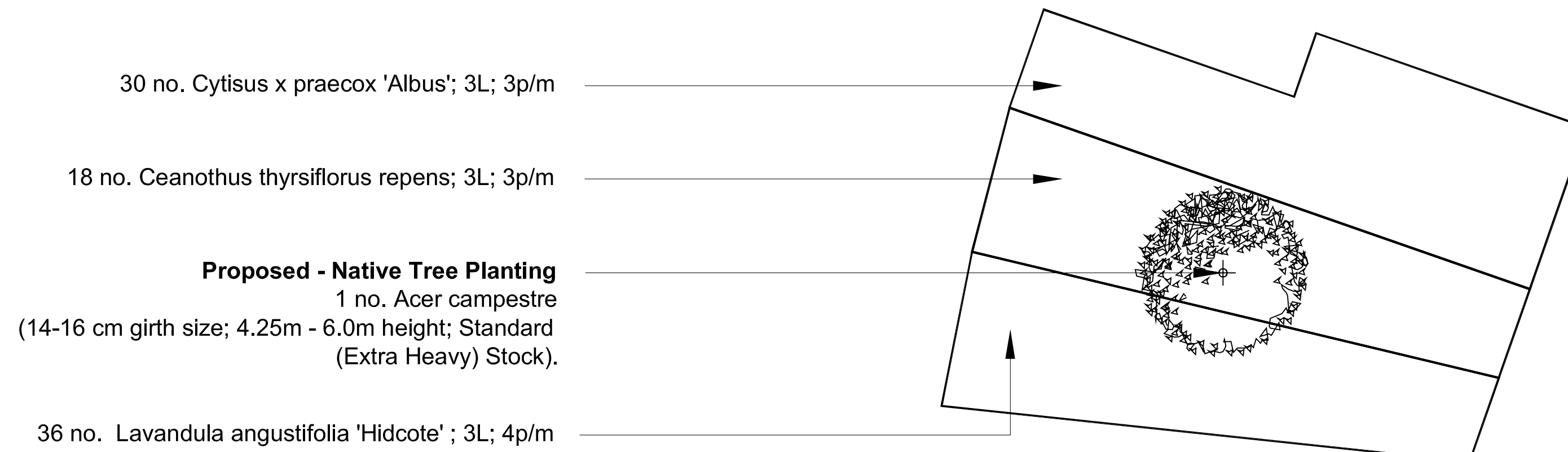


Planting Area No. 04



Planting Area No. 05



Legend

Proposed Native Specimen Tree Planting
 (14 - 16 cm girth size; Standard Extra Heavy;
 4.25 - 6.0m height)

Proposed Ornamental Specimen Tree Planting
 (14 - 16 cm girth size; Standard Extra Heavy;
 4.25 - 6.0m height)

Proposed Ornamental Specimen Tree Planting
 (10-12 cm girth size; 3.0m - 3.5m height;
 Standard Stock)

Specimen and Accent Planting

Shrub / Groundcover Planting Areas
 Planting Areas to be a minimum of 300 mm
 depth of subsoil overlain with a minimum of
 450 mm depth of Multi-Purpose Topsoil to
 BS:3882:2015. Topsoil to be tested and
 certified by a Soil Scientist in accordance
 with the imported topsoil specification.

Herbaceous / Bulb Planting
 Herbaceous and Bulb Planting Areas

Proposed Mixed Native Species Hedgeline
 Proposed Mixed Native Species Hedgeline planting.
 Hedgeline planting to be 60-80cm height; 2 no.
 staggered rows set 400mm apart; planting to be at
 400mm centres.

Proposed Ornamental Species Hedgeline
 Proposed Ornamental Species Hedgeline planting.
 Hedgeline planting to be 60-80cm height; 2 no.
 staggered rows set 400mm apart; planting to be at
 400mm centres.

Planting Areas / Mulching
 All proposed shrub planting areas to be overlain with 75mm depth Ornamental Bark Mulch.
 Planting areas to be mulched with fine graded ornamental bark mulch 5 - 30mm nominal
 particle size: BS4970:1987.

Tree Pit Tree Planting
 Tree Pits

- Sizes:
 - 10-12 cm girth size, 3.0m - 3.5m height;
 - Standard Stock; and
 - 14 - 16cm Girth; 4.25 - 6.0m height (Standard Extra Heavy) ;
- Tree Pit Size: 1000 mm diameter x 750 mm depth.
- Backfilling Material**
 - Composition: Previously prepared mixture of topsoil excavated
 from pit and additional topsoil as required, together with:
 - Amalcorant / Conditioner: 20 % by volume, together with 20 %
 volume Free Planting Compost (6 mm peat free organic
 compost) supplied by Bourne Aronley, Newenden, Cranbrook,
 Kent, TN18 5QG. Tel: 01797 252298; Fax: 01797 253115.
 Email: enquiries@bourne.co.uk, or equal and approved; and
 - 2500 grams of Seaman Soil Builder per tree planting pit.
 To be supplied by Algimure Products, Stone Hill, Egerton,
 Ashford, Kent, TN27 9BU. Tel: 01223 750241; Fax: 01223
 756419 or equal and approved.

All staked trees:

- Ties: Adjustable ties.
- Tying: Secure trees firmly but not rigidly with a single tie centrally on
 brace for long double staking.
- Advanced Nursery Stock (Standard Extra Heavy). Trees to be long
 double staked, 2 no. 2400 x 75 mm diameter timber stakes driven
 vertically into the ground to finish 300mm below base of pit; 2 no. per
 tree.
- Stakes to be cut level at 1000mm height and braced with timber
 crossbar.

Detailed Planting Plans / Specification
 (Refer to Drawings LLD954 Soft Landscape Layout and LLD954 Detailed Planting Schedule
 and Specification).

Rev	Description	Date	Initials
00	Planning Issue	07.07.16	KM

Lizard Landscape Design

Lizard Landscape Design and Ecology
 34 South Street
 Tarring
 Worthing
 West Sussex
 BN14 7LH
 Tel: 01903 216033
 Email: lizard.landscape@btconnect.com

Project title
Meridian Primary School
 Peacehaven, East Sussex

Drawing title
Detailed Planting Plan
 (Drawing 2 of 4)

Scale
 1:50@A1

Drawn
 KM

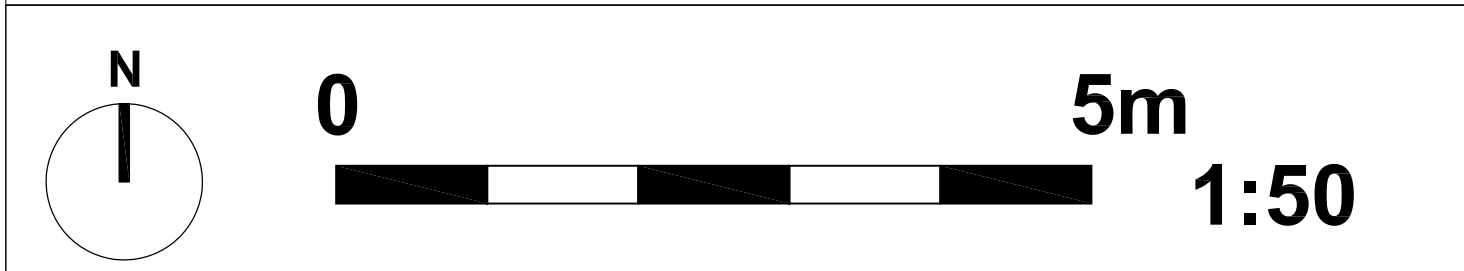
Date
 30.06.16

Approved

Drawing No
LLD954 / 04 - 02

CAD Filename
 LLD954/ CAD Drawings

Revision
 00



Detailed Planting Plan Meridian Community Primary School, Peacehaven